

Soarian Remote Log In Troubleshooting

Go to the Log in Screen using the URL: <https://gw.ehim.uhsinc.com/c0pg>

Add this URL to your Internet Explorer 6.208 to your trusted sites. Disable Verification in Trusted Sites. Select Trusted Sites. Cut and paste in the URL into the “Add this Web Site to the Zone Box: and select Add. Make sure you deselect the “Require Server Verification (HTTPS) for all sites in this zone. Click OK

Work Station requirements are:

Required Hardware

- 300 MHz Intel Processor or Higher
- A 10/100 Fast Ethernet Network Interface Card supported by the network and cable type
- Video Adapter Card
- 17” Color Monitor, 1280 x 1024 resolution. (UHS Verified that 15” Flat Panel monitor is sufficient for Imaging view only workstation)
- Keyboard and Mouse
- 128 MB RAM

Required Software

- Microsoft Windows 2000 or XP Workstation License
- Microsoft Internet Explorer 6.028
- Active X (Siemen’s will automatically download the correct version when logging into Soarian. You must have Administrator rights.)

PC Settings:

Screen Resolution:

From the Control Panel (i.e., use the **Settings** tab on the **Display Properties** window, which accessible by selecting **Display** from the **Control Panel**).

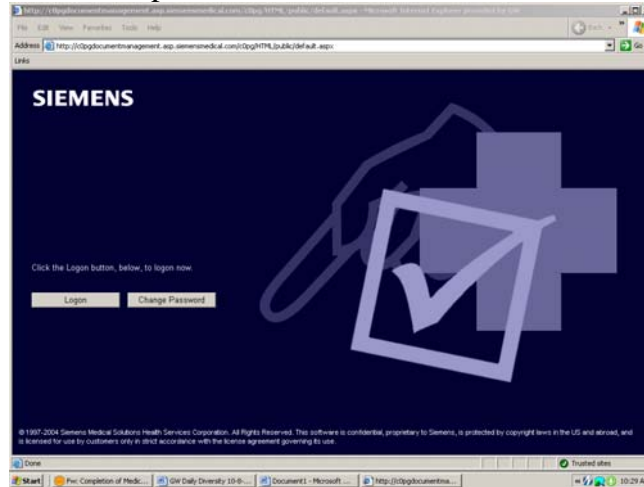
- In the **Colors** group box, ensure that your setting is equal to or higher than **High Color (16 Bit)**. Document Imaging can operate at a lower setting; however, the cream color displayed on required fields will not appear.
- In the **Screen area** group box, ensure that your setting is equal to or higher than **1024 by 768**

IE Settings

Turn off Pop Up Blockers in Internet Explorer. Go to Tools menu and select Turn Off Pop Up Blockers.

Disable Verification in Trusted Sites. Select Trusted Sites. Cut and paste in the URL into the “Add this Web Site to the Zone Box: and select Add. Make sure you deselect the “Require Server Verification (HTTPS) for all sites in this zone. Click OK

The log in screen should be as pictured below.



Enter your log in ID and password.

Active X is required to run Soarian. If your computer does not have it, a pop up bar will appear under the tool bar. (Did you turn off pop up blockers?) Agree to install. Administrator Rights are needed for this to download. It takes a few minutes to download so let it run for 5 to 10 minutes.

In IE under Tools, select Internet Options and click on the Advanced tab. Next, deselect “Reuse Windows for launching short cuts”.

