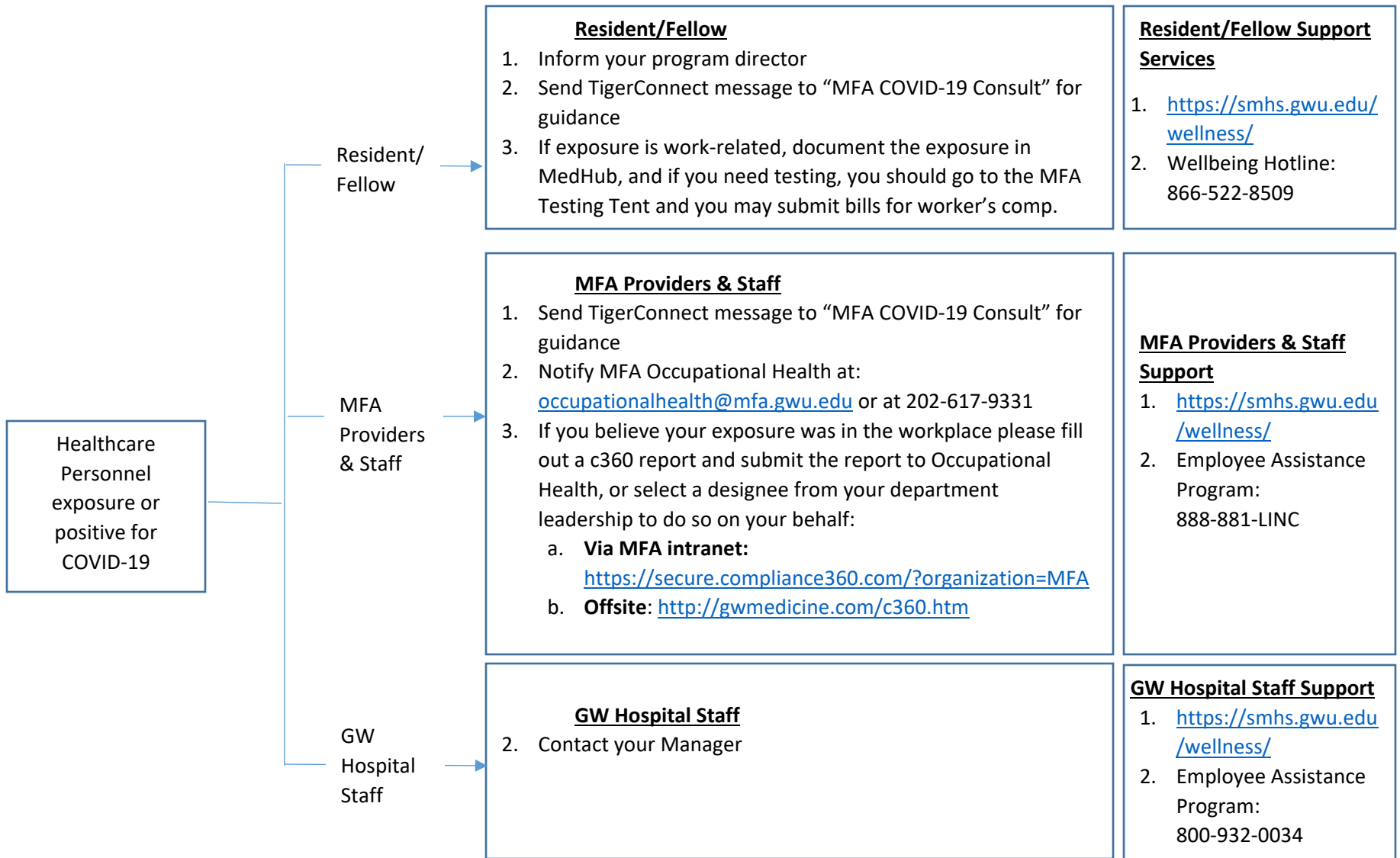
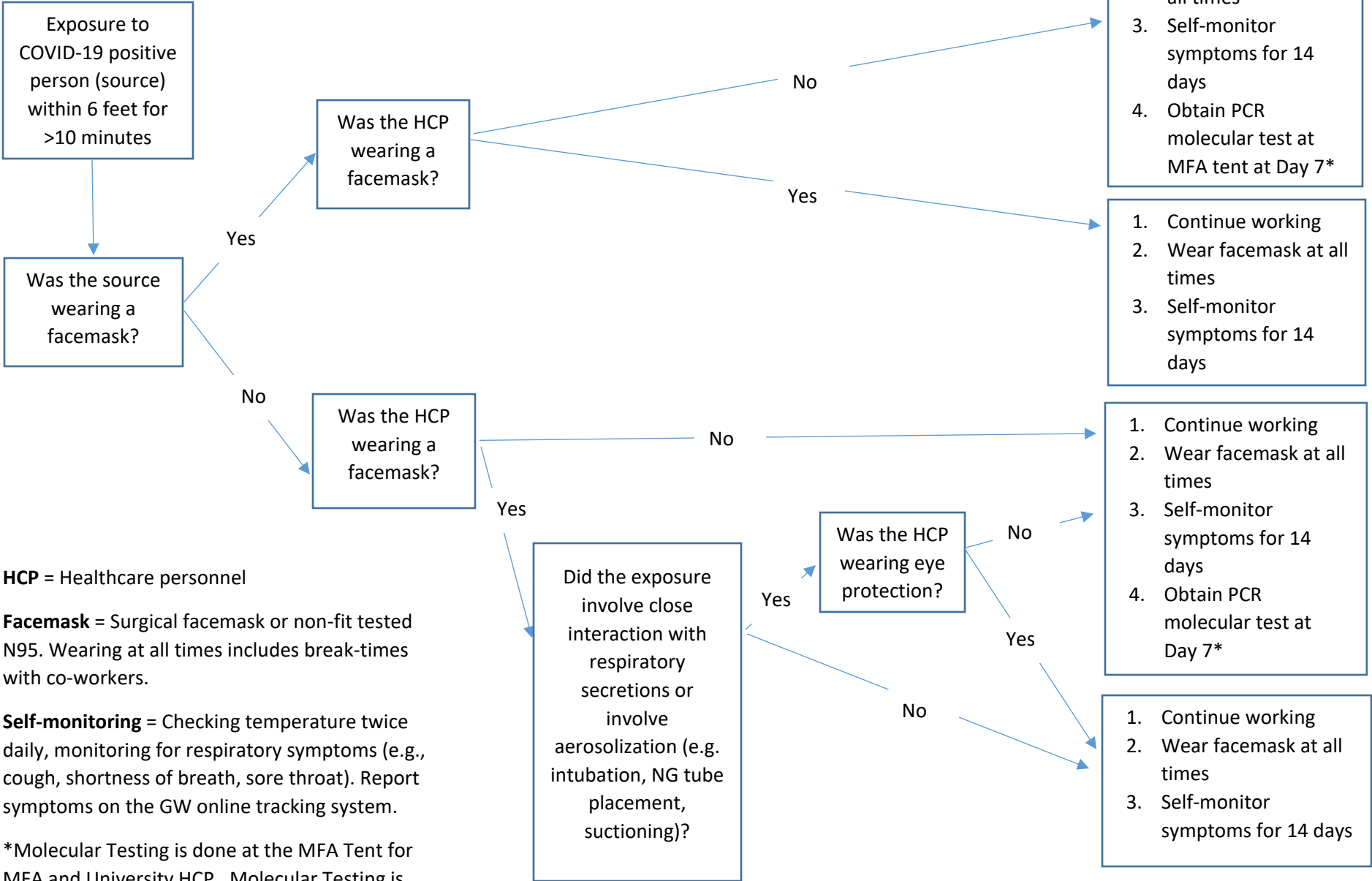


**Healthcare Personnel COVID-19  
Exposure or Positive Notification**



Note: Contractors should contact their employer, as well as notify their GW contact

# Healthcare Personnel COVID-19 Exposure Protocol



**HCP** = Healthcare personnel

**Facemask** = Surgical facemask or non-fit tested N95. Wearing at all times includes break-times with co-workers.

**Self-monitoring** = Checking temperature twice daily, monitoring for respiratory symptoms (e.g., cough, shortness of breath, sore throat). Report symptoms on the GW online tracking system.

\*Molecular Testing is done at the MFA Tent for MFA and University HCP. Molecular Testing is done at the Hospital for Hospital employees.

## Healthcare Personnel COVID-19 Positive Result Protocol

Healthcare  
Personnel  
positive for  
COVID-19

1. Contact your healthcare provider for management of COVID-19 illness
2. Follow CDC self-quarantine guidance for up to 14 days, with your specific instructions coming from your employer's Occupational or Employee Health:
  - Stay home except to get medical care & notify doctor in advance that you have COVID-19
  - Separate from other people and pets in home
  - Wear a facemask & cover coughs and sneezes
  - Seek medical attention right away if illness worsens (SOB)
  - Do not return to work until you receive clearance from your employer's Occupational or Employee Health

Healthcare personnel  
need 72 hours since  
recovery from symptoms  
AND 7 days since initial  
symptoms, followed by 1  
negative COVID-19 test,  
with clearance from their  
employer's Occupational  
or Employee Health