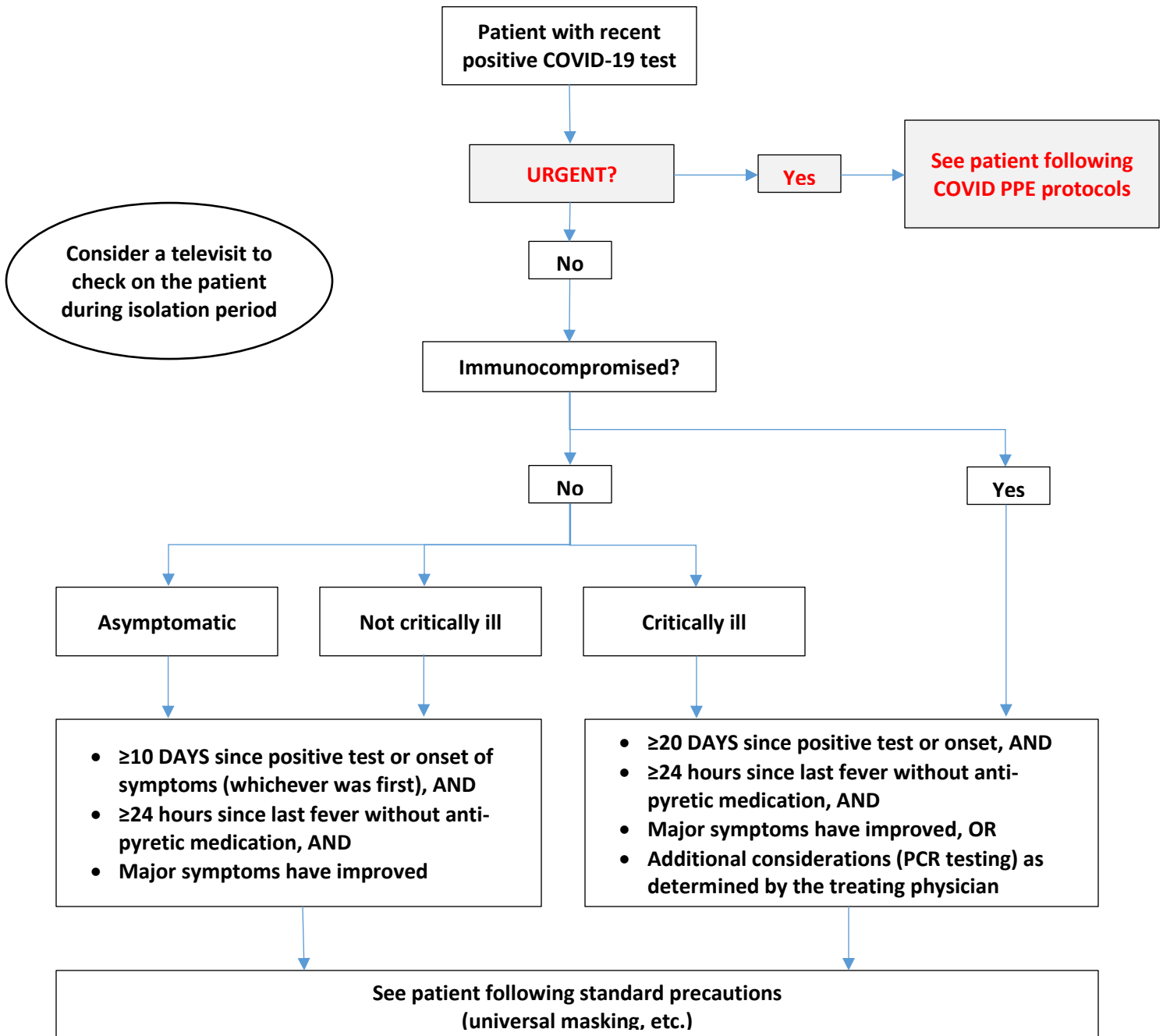


# Guidance on Seeing Patients with Recent Positive COVID-19 Test



Protocol is based on DC Health and CDC guidance. See detailed basis at <https://www.cdc.gov/coronavirus/2019-ncov/hcp/duration-isolation.html#cecommendations>.

\* **Immunocompromised:** includes patients with organ transplant, patients undergoing active treatment of malignancy, and other conditions as determined by physician.